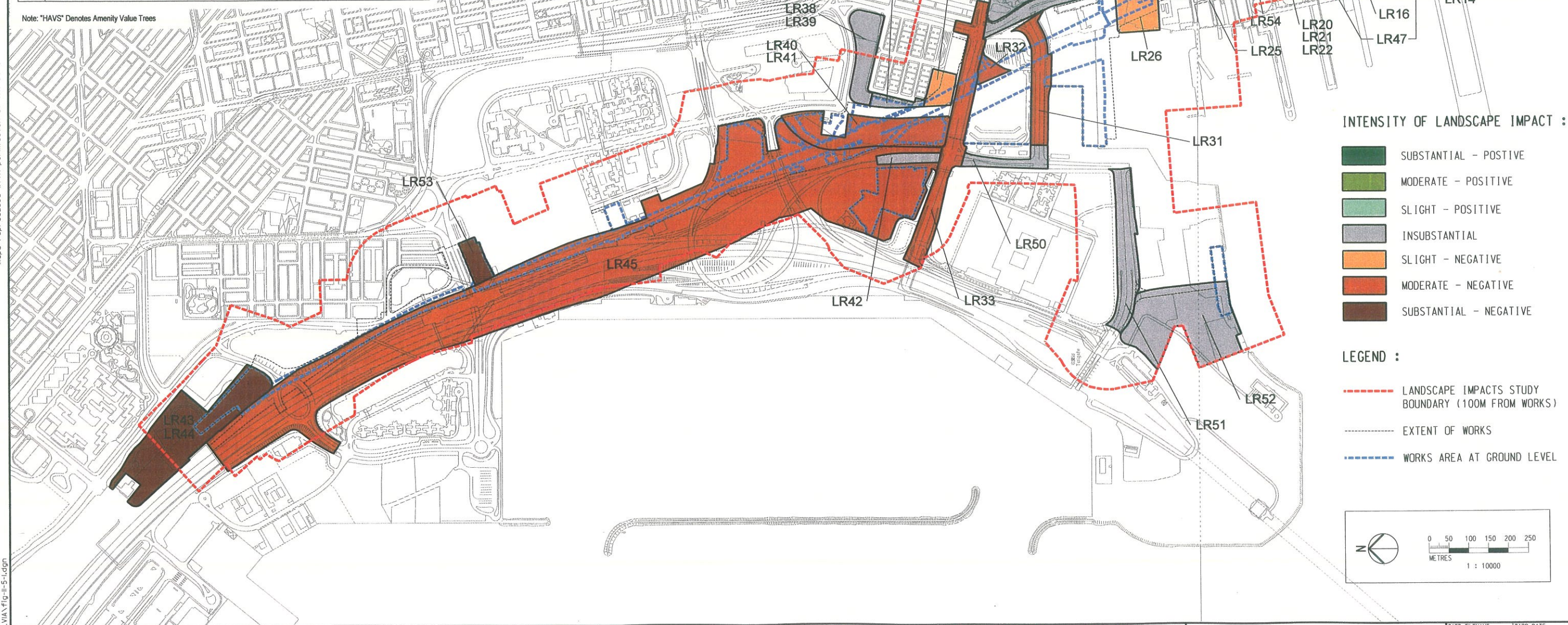


Maps reproduced with permission of The Director of Lands. (C) Hong Kong Government.

Id. No.	Landscape Resource	Affected Trees	Affected HAVS
LR1	Public Open Space at Signal Hill		
LR2	Trees at Signal Hill		
LR3	Topography at Signal Hill		
LR4	Proposed Middle Road Children's Playground		
LR5	Landscape at the New World Renaissance Hotel and Hotel Intercontinental Hong Kong		
LR6	Public Landscape Area at the Cultural Centre/ Space Museum/ Hong Kong Museum of Art complex		
LR7	Trees at the Cultural Centre/ Space Museum/ Hong Kong Museum of Art complex	32	9
LR8	Trees/ Planting along Salisbury Road	17	4
LR9	Public Open Space at the corner of Peking Road/ Kowloon Park Drive		
LR10	Mature tree at the corner of Peking Road/ Kowloon Park Drive		
LR11	Public Open Space within Kowloon Park Drive Sitting Out Area		
LR12	Trees within Kowloon Park Drive Sitting Out Area		
LR13	Trees at Former Marine Police Headquarters site		
LR14	Topography at Former Marine Police Headquarters site		
LR15	Trees along Hankow Road		
LR16	Trees along Canton Road (from Salisbury Road to Kowloon Park Drive)	12	0
LR17	Public Open Space at Kowloon Park		
LR18	Trees at Kowloon Park		
LR19	Topography at Kowloon Park		
LR20	Public Open Space at Kowloon Park Drive Children's Playground		
LR21	Trees at Kowloon Park Drive Children's Playground		
LR22	Topography at Kowloon Park Drive Children's Playground		
LR23	Champion trees along Haiphong Road corridor		
LR24	Old Granite Retaining Wall along to northern edge of Haiphong Road		
LR25	Trees along Canton Road (from Canton Road Fire Station to Austin Road)	36	7
LR26	Trees at WKCD north of Canton Road Fire Station	11	1
LR28	Public Open Space King George IV Park (Jordan Road/ Canton Road Junction)		

Id. No.	Landscape Resource	Affected Trees	Affected HAVS
LR29	Trees at King George IV Park (Jordan Road/ Canton Road Junction)		
LR30	Trees along Canton Road (from Austin Road to Jordan Road)		
LR31	Trees along Wui Cheung Road	78	10
LR32	Trees / Planting at Bus Station on Wui Cheung Road	77	10
LR33	Trees along Jordan Road	130	15
LR35	Trees at the Planned Local Open Space at Man Wui Street	8	2
LR36	Planned Local Open Space at Man Wui Street		
LR37	Amenity Area at Man Cheong Street		
LR38	Trees/ vegetation at the Planned Local Open Space at Man Cheong Street		
LR39	Planned Local Open Space at Man Cheong Street		
LR40	Trees/ vegetation at the Planned District Open Space west of at Man Cheong Estate	25	0
LR41	Planned District Open Space west of Man Cheong Estate		
LR42	Trees/ vegetation to central reservation of West Kowloon Highway		
LR43	Nam Cheong Park Temporary Open Space		
LR44	Trees in Nam Cheong Park Temporary Open Space	7	0
LR45	Vegetation along West Kowloon Highway corridor	575	4
LR47	Trees along Kowloon Park Drive (From Haiphong Road to Canton Road)		
LR48	Trees in Canton Road Playground		
LR49	Public Open Space at Canton Road Playground		
LR50	Trees along Lin Cheung Road		
LR51	Trees along Austin Road West		
LR52	Temporary landscape at Kowloon Point		
LR53	Landscape Forecourt of Olympian City 2 Development	60	25
LR54	Public Open Space at Corner of Canton Road and Kowloon Park Drive	12	6
Total Estimated Quantity of Affected Trees (Including High Amenity Value Trees)		1080	
Total Estimated Quantity of Affected High Amenity Value Trees			93

Note: "HAVS" Denotes Amenity Value Trees



PRINTED BY: Son
FILENAME: J:\D34\vgm-LVA\Fig-11-5-1.dgn
20-Jul-2004 12:22:51 PM

REV	DATE	BY	SUB	APP	DESCRIPTION

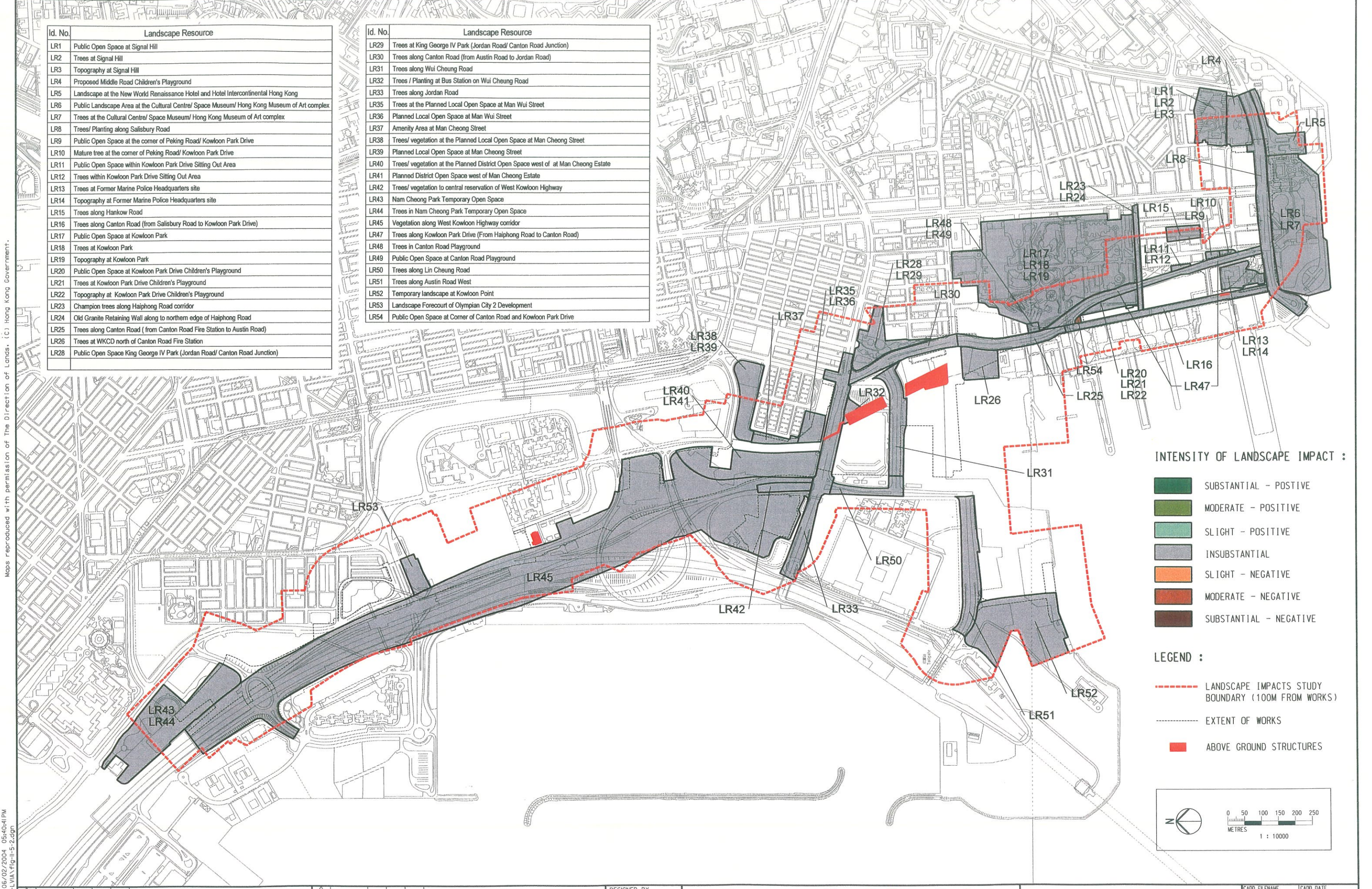
DESIGNED BY	N. HENDRY
DRAWN BY	J. LAM
CHECKED BY	A. DUGGIE
IN CHARGE	A. DUGGIE
DATE	09OCT2002

REV	DATE	BY	SUB	APP	DESCRIPTION

 New Railway Projects 新鐵路策劃	Ove Arup & Partners Hong Kong Limited ARUP	KOWLOON SOUTHERN LINK KSL GSA-5100 EIA & ASSOCIATED SERVICES RESIDUAL LANDSCAPE RESOURCE IMPACTS IN CONSTRUCTION PHASE	CADD FILENAME FIG-11-5-1.DGN	CADD DATE 09OCT2002
			SCALE 1:10000 @ A3	DRAWING NUMBER FIGURE 11-5-1
		SHEET NO. STAGE CODE / REV P B		

Id. No.	Landscape Resource
LR1	Public Open Space at Signal Hill
LR2	Trees at Signal Hill
LR3	Topography at Signal Hill
LR4	Proposed Middle Road Children's Playground
LR5	Landscape at the New World Renaissance Hotel and Hotel Intercontinental Hong Kong
LR6	Public Landscape Area at the Cultural Centre/ Space Museum/ Hong Kong Museum of Art complex
LR7	Trees at the Cultural Centre/ Space Museum/ Hong Kong Museum of Art complex
LR8	Trees/ Planting along Salisbury Road
LR9	Public Open Space at the corner of Peking Road/ Kowloon Park Drive
LR10	Mature tree at the corner of Peking Road/ Kowloon Park Drive
LR11	Public Open Space within Kowloon Park Drive Sitting Out Area
LR12	Trees within Kowloon Park Drive Sitting Out Area
LR13	Trees at Former Marine Police Headquarters site
LR14	Topography at Former Marine Police Headquarters site
LR15	Trees along Hankow Road
LR16	Trees along Canton Road (from Salisbury Road to Kowloon Park Drive)
LR17	Public Open Space at Kowloon Park
LR18	Trees at Kowloon Park
LR19	Topography at Kowloon Park
LR20	Public Open Space at Kowloon Park Drive Children's Playground
LR21	Trees at Kowloon Park Drive Children's Playground
LR22	Topography at Kowloon Park Drive Children's Playground
LR23	Champion trees along Haiphong Road corridor
LR24	Old Granite Retaining Wall along northern edge of Haiphong Road
LR25	Trees along Canton Road (from Canton Road Fire Station to Austin Road)
LR26	Trees at WKCD north of Canton Road Fire Station
LR28	Public Open Space King George IV Park (Jordan Road/ Canton Road Junction)

Id. No.	Landscape Resource
LR29	Trees at King George IV Park (Jordan Road/ Canton Road Junction)
LR30	Trees along Canton Road (from Austin Road to Jordan Road)
LR31	Trees along Wui Cheung Road
LR32	Trees / Planting at Bus Station on Wui Cheung Road
LR33	Trees along Jordan Road
LR35	Trees at the Planned Local Open Space at Man Wui Street
LR36	Planned Local Open Space at Man Wui Street
LR37	Amenity Area at Man Cheong Street
LR38	Trees/ vegetation at the Planned Local Open Space at Man Cheong Street
LR39	Planned Local Open Space at Man Cheong Street
LR40	Trees/ vegetation at the Planned District Open Space west of Man Cheong Estate
LR41	Planned District Open Space west of Man Cheong Estate
LR42	Trees/ vegetation to central reservation of West Kowloon Highway
LR43	Nam Cheong Park Temporary Open Space
LR44	Trees in Nam Cheong Park Temporary Open Space
LR45	Vegetation along West Kowloon Highway corridor
LR47	Trees along Kowloon Park Drive (From Haiphong Road to Canton Road)
LR48	Trees in Canton Road Playground
LR49	Public Open Space at Canton Road Playground
LR50	Trees along Lin Cheung Road
LR51	Trees along Austin Road West
LR52	Temporary landscape at Kowloon Point
LR53	Landscape Forecourt of Olympian City 2 Development
LR54	Public Open Space at Corner of Canton Road and Kowloon Park Drive



PRINTED BY: Jancy
 FILENAME: J:\03\M\ dgn-LVIA\Fig-11-5-2.dgn
 06/02/2004 05:40:41PM

REV	DATE	BY	SUB	APP	DESCRIPTION

REV	DATE	BY	SUB	APP	DESCRIPTION

DESIGNED BY
N. HENDRY
 DRAWN BY
J. LAM
 CHECKED BY
A. DUGGIE
 IN CHARGE
A. DUGGIE
 DATE
09OCT2002


New Railway Projects
 新鐵路策劃

 Ove Arup & Partners Hong Kong Limited

KOWLOON SOUTHERN LINK KSL GSA-5100
 EIA & ASSOCIATED SERVICES
RESIDUAL LANDSCAPE
RESOURCE IMPACTS IN
OPERATION PHASE

CADD FILENAME	F16-11-5-2.DGN	CADD DATE	09OCT2002
SCALE	1:10000 @ A3		
DRAWING NUMBER	FIGURE 11-5-2		
SHEET NO.		STAGE CODE	P
		REV	A